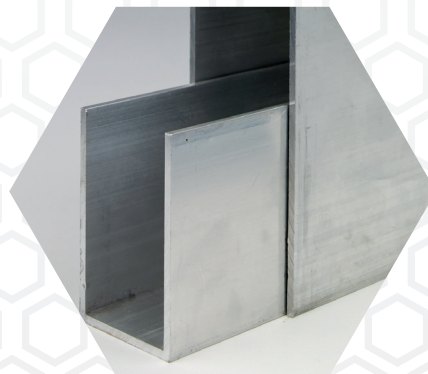
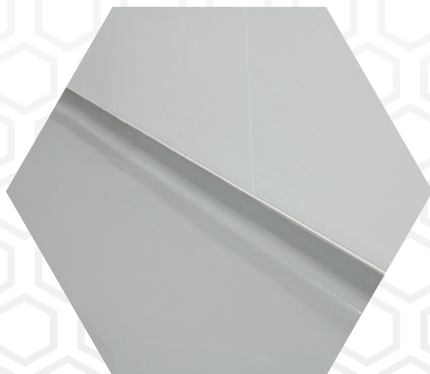


# Adjustable Recessed Base



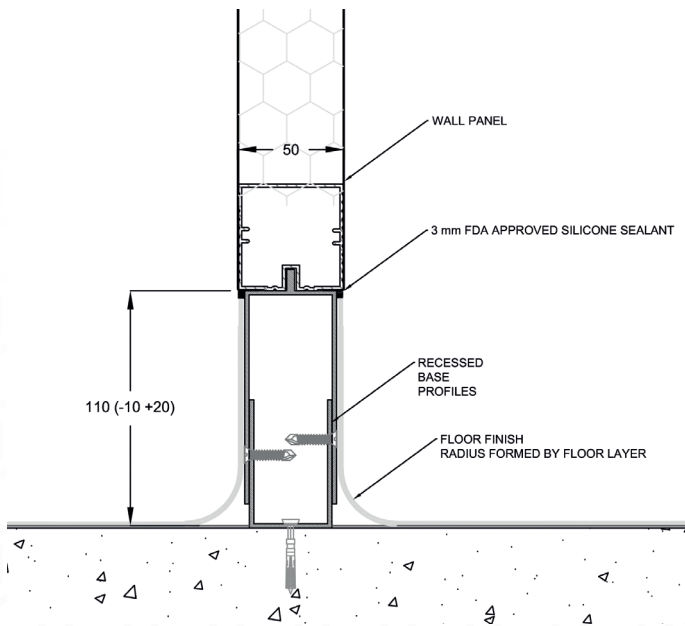
Adjustable,  
aluminium floor  
track

Recessed base is a two part floor track system that allows for adjustable heights. It provides a solid, level and flush interface between wall and floor.



See over for technical  
specifications

# Adjustable Recessed Base



- High specification aluminium adjustable base
- Two parts including base channel and adjustable panel interface
- Fits into our Puracore® extrusion

## Summary Specification

<b>Components</b>	Base panel and adjustable panel interface
<b>Thickness</b>	2.5mm
<b>Dimensions</b>	For 2mm vinyl flooring: adjustable height 100-130mm
<b>Maximum Length</b>	3000mm
<b>Material</b>	Aluminium 6063 extrusion
<b>Finish</b>	Flush finish between 2mm vinyl flooring and panel
<b>Sealing</b>	Panel fits directly onto adjustable panel interface and can be sealed in place
<b>Fixing</b>	Base channel fixed directly to existing floor with hammerscrew or fixings suitable for floor substrate. Upper section drilled and countersunk at 500mm centres. Fixing screws supplied
<b>Accessories</b>	Floor cove formers supplied by flooring suppliers



**Puracore**®



Puracore, 3 Portview Road, Avonmouth, Bristol, Avon, BS11 9LQ, United Kingdom



+44 (0) 117 316 7025



sales@puracore.com



www.puracore.com