

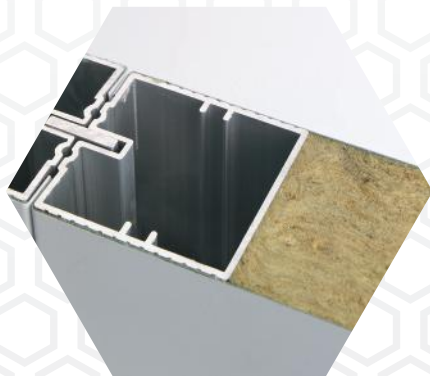
50mm Cleanroom Wall Panel



FM approved
cleanroom wall
panel for our
unique system

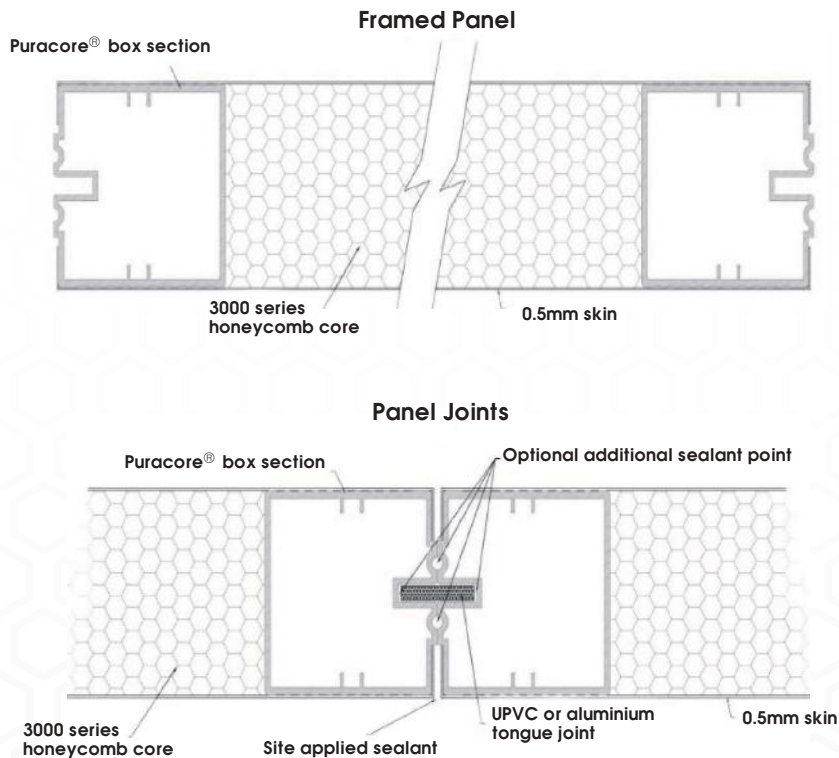
Puracore[®] 50mm aluminium honeycomb core panels are our standard and most popular within the cleanroom panel range. With easy installation and FM approvals, this panel provides a high specification solution with an outstanding strength to weight ratio.

Available with FM approved aluminium honeycomb, mineral fibre, PIR or paper honeycomb.



See over for technical
specifications

50mm Cleanroom Wall Panel



Summary Specification

Thickness	50mm
Standard Dimensions	1200mm x 3000mm
Maximum Length	Up to 6000mm
Core	48.8mm thick 3/4" aluminium honeycomb
Facing Skin	0.5mm galvanised steel substrate with specified finish - stainless steel/aluminium powder coat
Finish for Galvanised Steel Substrate	PVC laminate/polyester/primer painted/P.E.T.
Panel Frame	Aluminium 6063 box extrusion 4 sided
Adhesive	Twin pack solvent free adhesive @ 300g/m ² per face
Tongue Options	Flexible PVC/rigid PVC/aluminium 4 side cruciform
Weight	13kg/m ²



Puracore®



Puracore, 3 Portview Road, Avonmouth, Bristol, Avon, BS11 9LQ, United Kingdom



+44 (0) 117 316 7025



sales@puracore.com



www.puracore.com