

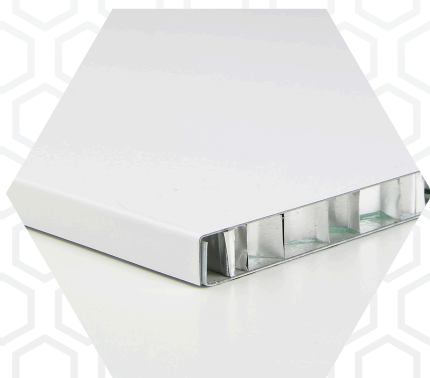
10mm Cleanroom Liner Panel



Lining panel
ideal for infills,
columns and
corridors

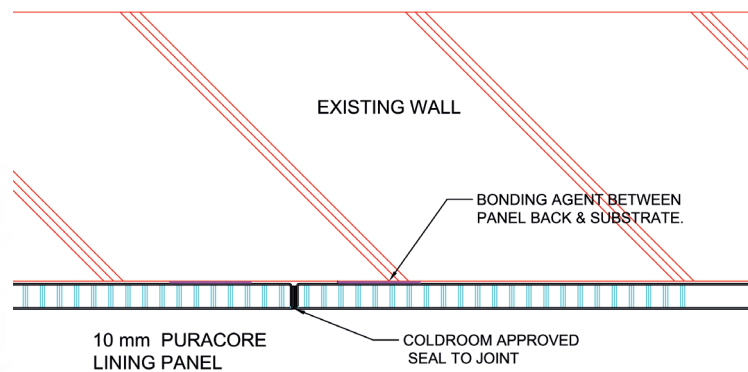
Puracore[®] 10mm aluminium honeycomb panels have been specifically designed to be used as cladding to existing walls/columns or to be fitted into a structural framing system.

These FM approved panels can simply be bonded to an existing structure allowing for an exceptionally easy and clean application.



See over for technical
specifications

10mm Cleanroom Liner Panel



- Perfect for upgrades to existing facilities
- 10mm FM approved panels feature an aluminium honeycomb core giving a lightweight and rigid panel with a high impact resistance
- The core of aluminium honeycomb means the panel is non-shedding, ideal for hygienic and controlled environments

Summary Specification

Thickness	10mm
Standard Dimensions	1200mm x 3000mm (-/+)
Core	9mm thick 1/2" or 3/4" aluminium honeycomb 3000 grade
Facing Skin	0.5mm galvanised steel substrate with specified finish - stainless steel/aluminium powder coat
Finish for Galvanised Steel Substrate	PVC laminate/polyester/primer painted/P.E.T.
Adhesive	Twin pack solvent free adhesive @ 300g/m ² per face
Weight	8.7kg/m ²
Maximum Length	3000mm
Joint	Butt joint for site sealing
Fire Ratings	ASTM E84 Class A. FM Approvals 4882 and 4880



Puracore®



Puracore, 3 Portview Road, Avonmouth, Bristol, Avon, BS11 9LQ, United Kingdom

T +44 (0) 117 316 7025

E sales@puracore.com

W www.puracore.com