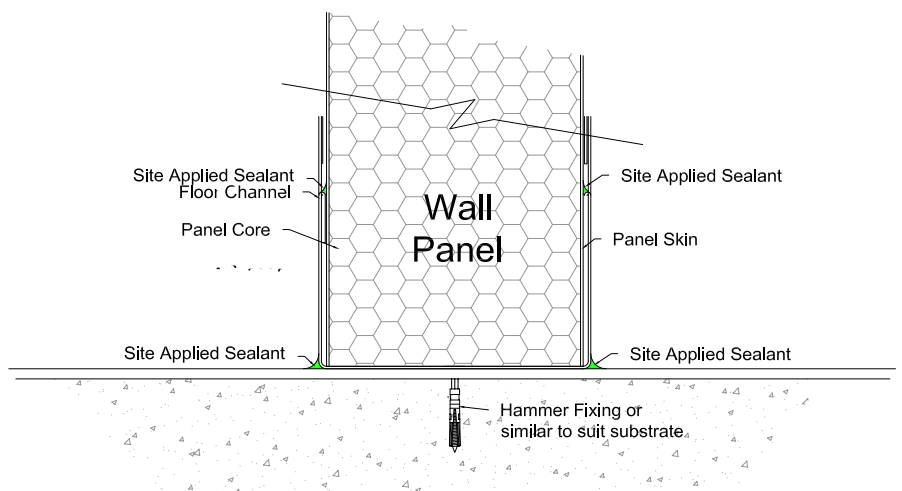




## Puracore® Channel Base



Summary Specification	
Thickness	0.5 mm
Standard Dimensions	50 x 50 x 50 mm with 10mm fold & crush to both legs
Max. Length	3000 mm
Material	Galvanised Steel Substrate / Stainless Steel
Finish	UPVC Laminate / P.E.T White Polyester Painted / Primer Painted / Brushed Stainless Steel
Colour	Finish to suit panels
Fixing	Fixed directly to existing floor with hammer screw or fixing suitable for floor substrate
Sealing	<ul style="list-style-type: none"> <li>Panel fits directly into channel and can be sealed with a proprietary sealant</li> <li>Base channel can also be sealed at the flooring interface</li> </ul>